



Get continuous monitoring that's simple and affordable.

While the need for effective cybersecurity grows more critical by the day, the ability of small and mid-size businesses and enterprises (SMBs and SMEs) to identify and manage vulnerabilities in their networks has remained far more limited than their larger counterparts. Until now.



The Nodeware Vulnerability Management Solution enhances security for SMBs and SMEs by proactively identifying, monitoring, and addressing potential vulnerabilities in their networks—all with breakthrough simplicity and affordability.



24/7

Continuous monitoring means your network is always protected



Simple

Our proprietary scoring method lets you quickly gauge the health of your network



Smart

Real-time alerts for new devices and critical vulnerabilities



Affordable

Enterprise-level monitoring at a price every business can afford

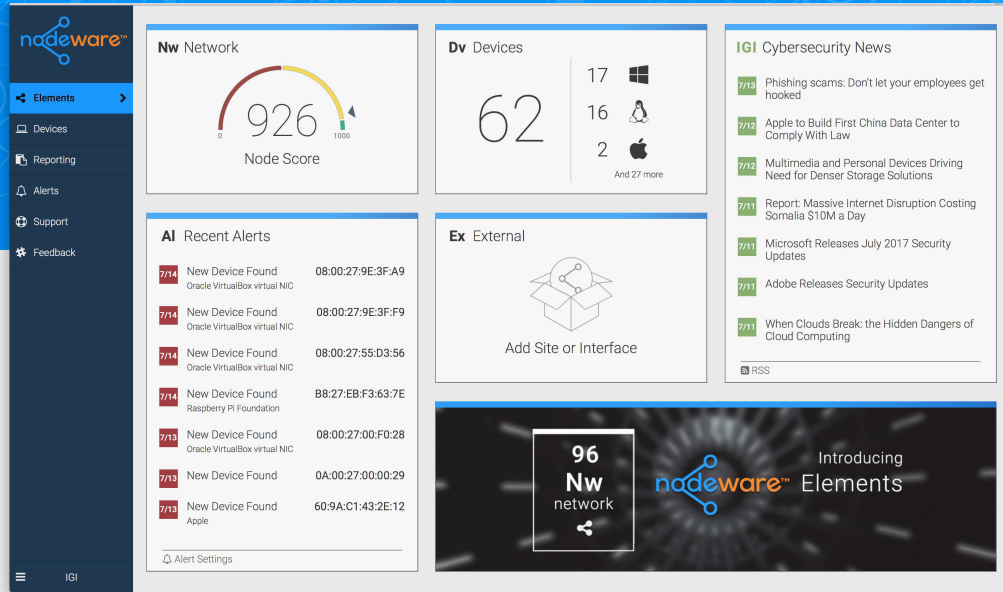
Nodeware simplifies vulnerability management

- Real-time inventory and fingerprinting of all assets on your network
- Intuitive, easy-to-navigate dashboard takes the guesswork out of identifying and fixing vulnerabilities
- Outlines remediation steps when vulnerabilities are identified
- Virtual or hardware-based deployment options

Nodeware is designed for SMBs

- Nodeware is user-friendly with simple installation and training
- Many network security products require up to 70% network utilization—Nodeware uses less than 5%, allowing your network to continue operating efficiently
- Nodeware is flexible based on your size and need—equally effective whether your network has a handful of desktop computers or hundreds of devices of all different types

How Nodeware Helps Protect Your Network.



The easy-to-use **Nodeware Manager** dashboard makes it easy to identify and remediate vulnerability issues.

Utilizing proprietary software through either a virtual machine or hardware sensor, Nodeware works in three phases:

1) Identification

- Your network is constantly scanned to locate and identify every connected device with an IP address, from computers and printers to smartphones and smart devices
- Includes scanning of external-facing IPs to provide a 360-degree view of the your network vulnerabilities

2) Monitoring

- All connected devices are then scanned 24x7 for vulnerabilities such as missing software patches

3) Notification

- All scan information, including vulnerabilities, is displayed on an easy-to-read dashboard that includes instructions for remediation
- You and your IT security provider can view the dashboard and be alerted to critical issues
- A proprietary scoring system makes it easy to understand your network's health



For more information, contact your Authorized Nodeware Reseller: